



HDMI-HDBaseT extender advanced PoC

Transfers HDMI-, IR- and RS232-signals via a Cat-6/7 cable at a distance of 70 m per HDBaseT at most.

Thanks to the bidirectional PoC function (Power over Cable), it is enough to apply one of the two devices with a mains plug. The other side is supplied with power via the cat cable.

- Transmission range up to 70 m for 1080p resp. 40 m for 4K2K@30Hz
- Voltage supply via PoC
- Supports HDMI 1.4, HDCP, EDID, 3D & 4K2K@30Hz
- Extremely flat metal casing, just 14 mm height

Illustration	Model	Specification	Ref. No.
	HDMI-HDBaseT extender advanced PoC transmitter	Inputs: HDMI, 3.5 mm jack for IR-Signale, RS232 as 3-pin euroblock (all socket) Outputs: RJ45 for HDBaseT, 3.5 mm jack for IR signals (all socket) Weight: approx. 220 g Dimensions: 135 x 77 x 14 mm (WxHxD)	7488 000 028
	HDMI-HDBaseT extender advanced PoC receiver	Outputs: HDMI, 3.5 mm Klinke for IR signals, RS232 as 3-pin. euroblock (all socket) Inputs: RJ45 for HDBaseT, 3.5 mm jack for IR signals (all socket) Weight: approx. 240 g Dimensions: 135 x 77 x 14 mm (WxHxD)	7488 000 029
	Power supply	suitable for transmitter or receiver 230 VAC / 18 VDC 2A	7488 000 60

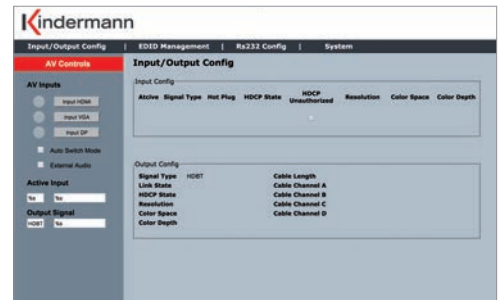
Multishare 31 - HDBaseT

Transmits HDMI, DisplayPort and VGA signals via Cat-6/7 cable per HDBaseT.





Supports bidirectional PoC; alternatively, the multishare can supply the receiver with power via the cat cable or be fed by it.

Supports PoE 802.3af class 2 as PD (voltage recipient).

- Transmission range up to 70 m for 1080p resp. 40 m for 4K2K@30Hz
- Automatic signal detection
- Control of the playback device via RS232, e. g. for automatic activation at signal recognition etc.



- Control and configuration via web interface

Illustration	Model	Specification	Ref. No.
 	Multishare 31 - HDBaseT transmitter	<ul style="list-style-type: none"> • Inputs: 1 x HDMI, 1 x DP, 1 x VGA, 1 x audio jack 3.5 mm stereo, 1 x network (RJ45), 1 x IR (all socket) • Outputs: 1 x HDBaseT, (RJ45), 1 x IR (all socket) • Supported standards: VGA up to 1920x1200 HDMI 1.4 up to 4K2K@30Hz DisplayPort 1.2 with 4K@30Hz • HDCP 1.4 conform • Supports EDID management • Flexible control options: Automatic switching, front button, contact inputs, RS232 and network (IP) via WebGUI • Metal casing with mounting brackets, colour: black • Dimensions: 190 x 103 x 29 mm (WxDxH), weight: 0.88 kg • Power Supply 24V DC, 1A 	7488 000 065
 	HDMI-HDBaseT extender PoC - receiver	<p>Receives HDMI-, IR- and RS232 signals via Cat-6/7 cable per HDBaseT, transmission range up to 70 m</p> <p>Voltage supply via PoC or power supply, compatible to 7488000065 and Konnect Design HDBaseT transmitter 7456000543</p> <p>Supports 3D & 4K2K@30Hz, HDCP, EDID, DeepColor</p> <p>Outputs: HDMI, 3.5 mm jack for IR signals, RS232 as 3-pin euroblock (all socket)</p> <p>Inputs: RJ45 for HDBaseT, 3.5 mm jack for IR signals (all socket)</p> <p>Weight: ca. 480 g Dimensions: 111 x 25 x 75 mm (WxHxD) Power Supply 24V DC, 1A</p>	7488 000 066